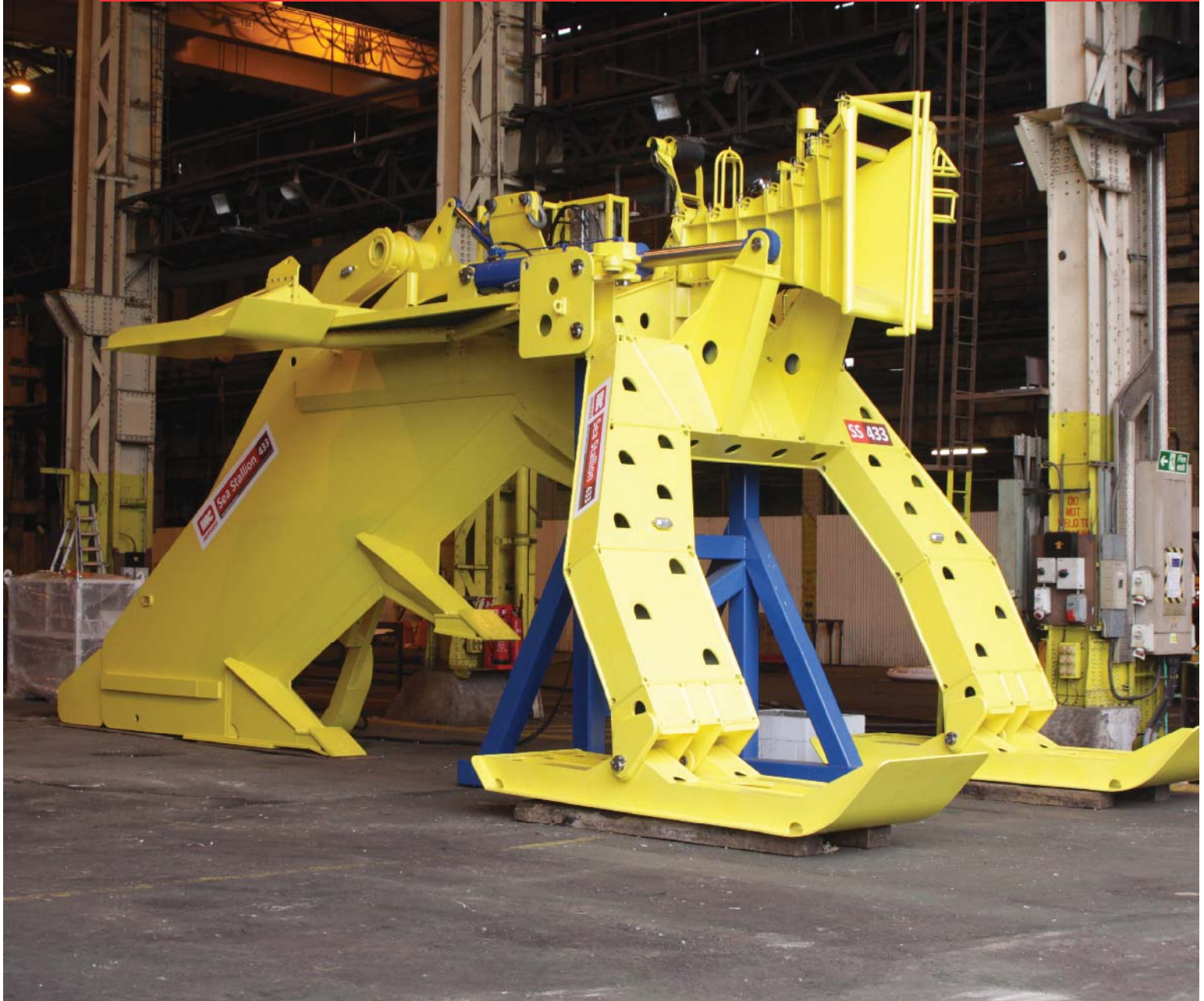


## IHC Engineering Business Subocean Sea Stallion 4



### Description

The Sea Stallion 4 cable plough is a proven tool for the effective installation and protection of submarine power cables.

It is specifically designed for the aggressive burial of cables in shallow water and features a robust chassis that can withstand tow forces in excess of 100 tonnes to permit cable burial in the hardest seabed conditions.

The plough's layout is optimised to ensure reliable operations and can bury cable up to 3m below the seabed.

## IHC Engineering Business **Subocean Sea Stallion 4**

### Overview

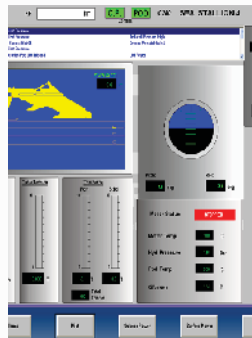
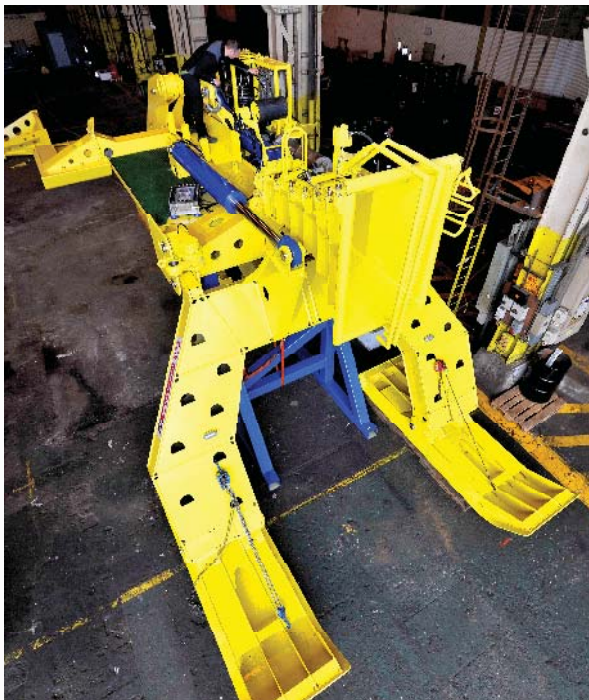
Sea Stallion 4 Power Cable Plough  
 Client: Subocean Ltd  
 Project Duration: 2009

### Features

- Nominal 3.3m trench depth
- Operation in up to 100m of water
- Open cable passage to allow subsea cable loading/unloading using divers
- Can sustain a pull force of 150t, 180t peak
- Can be launched and recovered using a A-Frame
- Portable control system in transit cases

### Benefits

- Up to 3m cable burial in a wide range of seabed conditions
- Robust and reliable trenching system
- Rapid mobilisation on a range of vessels
- Wide weather window of operation
- Environmentally friendly method of burying cables



### Rapid Mobilisation

The control system is provided in transit cases for ease of shipment and rapid mobilisation on a range of vessels.



### Share Design

Proven share design with a track record of effective cable burial up to 3m in a wide range of seabeds.



### Launch and Recovery

The plough can be adapted for handling by an A-Frame to extend the launch and recovery weather window.



### Environmentally Friendly

Burying cables using this method of ploughing is more environmentally friendly than alternative methods, including rock dumping.